



KX-980TW Pro

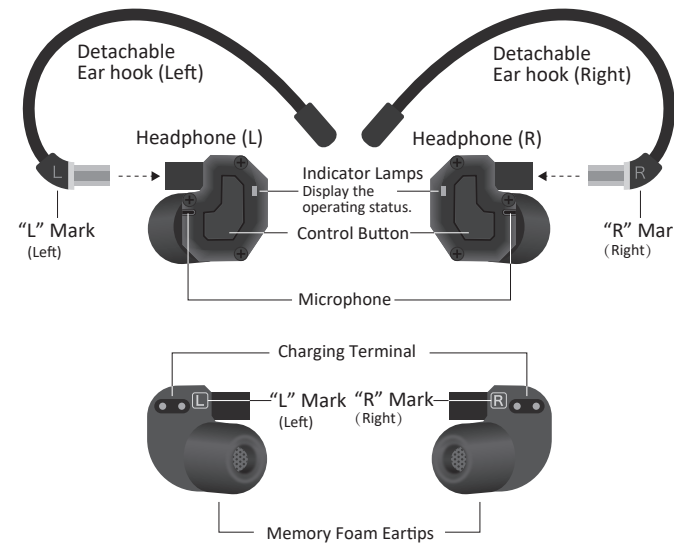
User Manual / Guarantee

Sincerely thank you for purchasing this products. Before using, please read through the manual, to ensure that you use the product correctly.



Part Names

Please check all the parts when you first time use. If there any missing, please contact us.

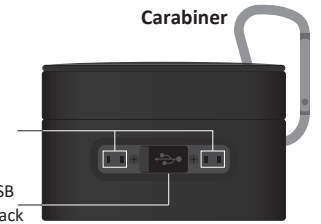


Silicone Eartips



L x 1 set M x 1 set S x 1 set

Carabiner



Micro USB Charge Jack

Charging Case

Charge Cable (25cm Length)



Bluetooth Specification

Communication mode	: Bluetooth Ver. 5.0
RF Power output	: Bluetooth class 2
Max communication distance	: 10M of visible range
Frequency band	: 2.4GHz
Support profiles	: A2DP, AVRCP, HFP, HSP
Support decoder	: SBC, AAC, aptX
Frequency	: 20 - 20,200Hz
Multi pairing	: 10 Devices (keep pairing set records)
Multi point	: Non - correspondence
Max last play time	: about 8 hours
Max phone call time	: about 4 hours
Max standby time	: about 60 hours
Charging box battery	: 700mAh Li - polymer
Self charging time	: about 2 hours

Earbuds Specification

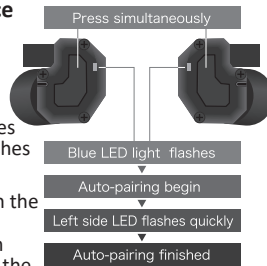
Type	: Hybrid
Driver	: ϕ 10mm Titanium film + Single balanced armature
Magnet	: High force magnet
Frequency response	: 20 - 40,000Hz
Impedance	: 26 Ω
Max Input power	: 5mW
Sensitivity	: 105dB/mW
Earphone battery	: 60mAh coin battery
Self charging time	: about 1 hours
Eartips	: Silicone eartips (L , M , S size eartips)
	: Memory foam eartips (M size eartips with earpieces)

Connect and Pair via Bluetooth

The First Time Pair with Bluetooth Device

1 Remove the headphones (L and R) from the case. Headphones turn on power automatically and begin to pair with each other. The Indicator lamps will flash in blue, and wait. When Left headphones flashes in blue quickly, right headphones flashes in blue slowly. Please follow step 2.

- ※ Press and hold for 5 seconds also can turn on the power.
- ※ Headphones need a few seconds to pair with each other. Any misoperation may influence the pairing.

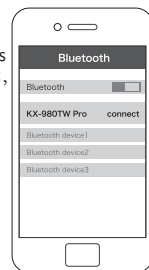


2 Use your Bluetooth device to begin the connecting process and search for the product. When your Bluetooth device finds the product, "KX-980TW PRO" will be display on the device. Select "KX-980TW PRO" to connect the product to your Bluetooth device. The product plays a confirmation tone "Connected" after finished.

Use your Bluetooth device and search for KX-980TW PRO, and select it.



When your device shows KX-980TW PRO connect, it is successful.

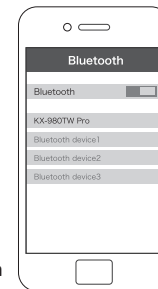


Connect and Pair via Bluetooth

The Second Time Pair with Bluetooth Device

- 1 When connecting a new Bluetooth device, you need to pair with the product. Once the Bluetooth device and the product are paired before. You do not need to them again.
- 2 Remove the headphones (L and R) from the case. Headphones turn on power automatically and begin to pair with each other. The Indicator lamps will flash in blue, and wait. The headphones will pair with each other and connect to your device automatically which connected before.

- ※ The product will give priority to connect the Bluetooth device which paired before. Thus, if you failed to pair with a new device, please make sure that the product do not connect the Bluetooth device connected before. When the product connect with a device, the indicator lamp will flash in slow.

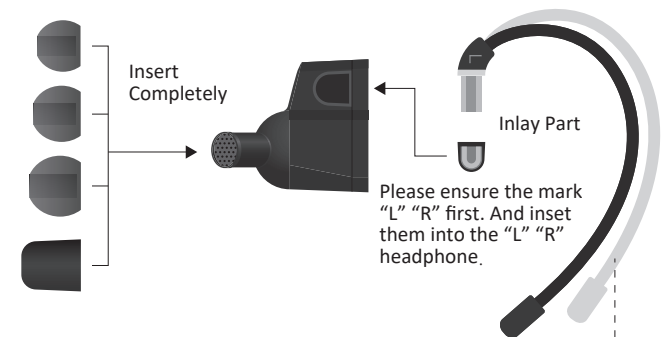


If you fail to connect.

If "KX-980TW PRO" are not shown on the Bluetooth device list, please put the product into the case for a second, and remove them from the case again. The product will turn into pairing model again. Meanwhile, you can reset the product. In this case, all the record inside will be clear.

Accessories

The product includes silicone eartips in 3 sizes (XS, S, M) and 1 pair memory foam eartips. At the time of purchase, the M-size memory foam eartips are attached.



Please ensure the mark "L" "R" first. And inset them into the "L" "R" headphone.

The earhook is flexible. It can adjust to completely fit your ear shape.

- ※ To ensure the best sound quality, select the eartips that is best for you, and adjust the eartips inside your ears for a snug fit. Inappropriate eartips will lead you be difficult to hear bass sounds.

Listening to Music

Please connect and pair with your Bluetooth device first. Use your Bluetooth device to start playback, referring to the device manual as necessary.

Music Play Press
 Music Pause Press

*Operation of left & right headphone are the same.



[Available Operation of Right Side]

Next Song Press Twice
 Volume Up Press Triple



[Available Operation of Left Side]

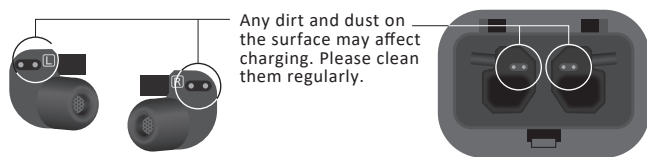
Last Song Press Twice
 Volume Down Press Triple



- ※ The volume control of devices are not available with the products
- ※ Selecting music, artist with the products are not available.
- ※ Touch twice left earphone may replay the current song due to different APPs.
- ※ Some control of devices may not available for music, video playback on some devices.

Cleaning

Get into the habit of regularly cleaning the product to ensure that it will last for a long time. Do not use alcohol, paint thinners, or other solvents for cleaning purposes.

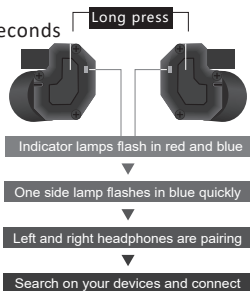


Any dirt and dust on the surface may affect charging. Please clean them regularly.

Reset the Headphone

When unpaired between left and right side headphone happened, (Only one side has sounds). Please follow the steps:

Long press left and right side button for 10 seconds simultaneously. When the left and right light flash in red and blue quickly. Please release the 2 button. Left and right headphones will begin to auto-pairing with each other. Only one side LED will flash in blue quickly. Then you can connect with your devices. Please refer "The first time pair with Bluetooth device."



Talking to the Phone

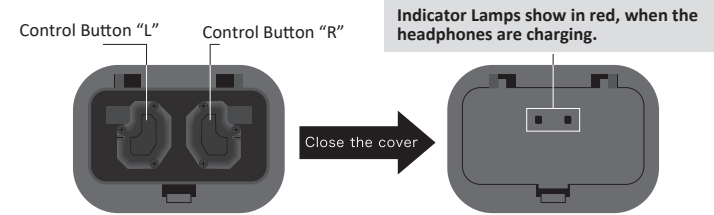
If your Bluetooth devices supports telephone features, you can use the microphone built into the product to talk on the phones.

Receiving a call Press Answer
 Talking Press End
 Receiving a call Press Twice Reject



Charge the Case and Headphones

Headphones Charge If the headphones battery power is running low, the product will play a confirmation tone through the headphones "Low Battery." for many time. Please place the headphones into the case.

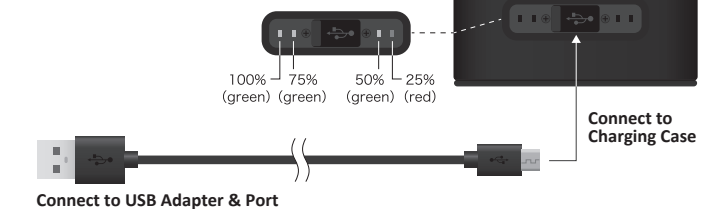


※Headphones power will be turn off automatically when putting into the case.

Charge the case

Charge the charging case with included USB charging cable when charge case battery under 25%.

Flashing: Charging
 All the lamps are on: Charging complete.



Connect to USB Adapter & Port

Connect to Charging Case

Troubleshooting and Safety

Problems about Pairing, no sound and the solution.

- Obstacles between product and the Bluetooth device, such as people, metal, walls and place the product and device closer together.
- Place the product and the Bluetooth device within 10m of each other.
- The product may be unable to pair if Bluetooth device connect to the product and Wi-Fi in the same time.
- Turn off Wi-Fi and pair the product with the Bluetooth device again.
- The product is unable to connect or control due to APPs and other products has connected your Bluetooth devices.
- Turn off the APPs and make sure your Bluetooth device has not connected with other product.

---Safety Precaution---

1. Do not use the product near the medical equipment. Radio waves may affect cardiac pacemakers and medical electronic equipment. Do not use the product inder medical facilities and keep 3m distance at least from them..
2. Do not subject the product to strong impact to avoid electric shock, malfunction or fire.
3. Do not lead the distance between Bluetooth device and the product out of 10m. It will lead unstable connection.
4. Sound transmission may be affected if you put the Bluetooth device into the handbag while working.
5. Do not disassemble, modify or attempt to repair the product to avoid electric shock, fire and malfunction.
6. Do not put foreign matter such as combustble materials, metal or liquid in the product.

- ※ Damage caused by the use of this product, our company shall not bear any liability except for legally recognized liability for compensation.
- ※ We can not assure the product connect all bluetooth devices will successful, our company shall not be liable for any communication error or abnormality of the customer's connection equipment.
- In order to improve the product, the specifications and appearance will also be changed without notice, please understand
- We will replace the defective products with new ones for manufacturing reasons.
- Other responsibilities are not assumed, please understand.

KX-980TW PRO Guarantee

This guarantee provides for free repair in accordance with the contents and items that have recorded. It is invalid if the necessary contents and items are out of this manual, so please read twice and keep a complete record in case of repairing.

1. If the product works abnormally under the manual guide. You can apply for after service to usor the store you buy it.
2. If the products are in the guarantee period, please contact the store or us for free repair.

We will charge for repair in the condition as follow, even in the warranty period.

- (1) The misuse and malfunction of the products and the damage caused by repair in private.
- (2) The malfunction caused by disaster like fire disasters, earthquake, thunder etc.
- (3) The malfunction and damage caused abnormally used. (Vocational use for a long time)
- (4) This guarantee hasn't recorded the date of purchase, customer name, sales name, or the guarantee contents are obliterated.

*This guarantee will not be issued again, please keep it properly.
 *The product is not promised to keep data which stored in your devices if there any damage occur. We disclam all responsibility for the loss or damage of the data in this situation.

Guarantee Period	1 Year from Purchase Date(Y/M/D):
Customer	Name
	Address
	TEL :
Sales Store	

Earnestly Promise

Your information in this guarantee will be only used for the repair. We will keep it confidential. We will not share to the third party without your agreement.